



1/2" straight extensions

SA-2...

SAM Outillage

10 rue Camille de Rochetaillée
42000 Saint-Etienne - France

RCS Saint-Etienne B 338 002 231 | SAS au capital de 8 189 583 €

<https://www.sam-outillage.com/>

Photos and texts not contractually binding. Do not litter. Document generated on 2024-05-06 23:10:22





DESCRIPTION

1/2" straight extensions

Satin chrome-plate finish.

STANDARDS / DIRECTIVES

NF ISO 1174-1, NF ISO 3316, DIN 3123

SPECIFIC DATA

SAM Outillage

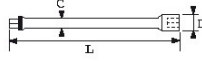
10 rue Camille de Rochetaillée
42000 Saint-Etienne - France

RCS Saint-Etienne B 338 002 231 | SAS au capital de 8 189 583 €

<https://www.sam-outillage.com/>

Photos and texts not contractually binding. Do not litter. Document generated on 2024-05-06 23:10:22





Sales reference	L (mm)	Weight (g)	C (mm)	D (mm)	Guarantee
SA-210 (not marketed)	125	188	12.5	23	O
SA-215 (not marketed)	250	339	14	23	O

Guarantee applied

O | SAM TOOL guarantee.

Guarantee without time limit on the tools used under normal conditions.

[>> Find out more](#)

SAM Outillage

10 rue Camille de Rochetaillée
42000 Saint-Etienne - France

RCS Saint-Etienne B 338 002 231 | SAS au capital de 8 189 583 €

<https://www.sam-outillage.com/>

Photos and texts not contractually binding. Do not litter. Document generated on 2024-05-06 23:10:22

