



## Impact bit-holder socket 1/2"

**NS-301**

### SAM Outillage

10 rue Camille de Rochetaillée  
42000 Saint-Etienne - France

RCS Saint-Etienne B 338 002 231 | SAS au capital de 8 189 583 €

<https://www.sam-outillage.com/>

Photos and texts not contractually binding. Do not litter. Document generated on 2024-05-03 03:04:37





## DESCRIPTION

### Impact bit-holder socket 1/2"

1/2 square impact socket for 1/2 end fittings

## STANDARDS / DIRECTIVES

NF ISO 1711-1, ISO 1711-1, DIN ISO 1711-1, ISO 1711-2

## SPECIFIC DATA

### SAM Outillage

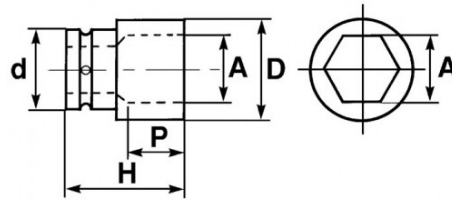
10 rue Camille de Rochetaillée  
42000 Saint-Etienne - France

RCS Saint-Etienne B 338 002 231 | SAS au capital de 8 189 583 €

<https://www.sam-outillage.com/>

Photos and texts not contractually binding. Do not litter. Document generated on 2024-05-03 03:04:37





Designation	IMPACT BIT-HOLDER SOCKET 1/2"
Sales reference	NS-301
Weight (g)	80
H (mm)	35
d (mm)	25
D (mm)	20
P (mm)	18
A (mm)	1/2
Guarantee	SJ-25

**Guarantee applied**

**O | SAM TOOL guarantee.**

Guarantee without time limit on the tools used under normal conditions.

[>> Find out more](#)

**SAM Outillage**

10 rue Camille de Rochetaillée  
42000 Saint-Etienne - France

RCS Saint-Etienne B 338 002 231 | SAS au capital de 8 189 583 €

<https://www.sam-outillage.com/>

Photos and texts not contractually binding. Do not litter. Document generated on 2024-05-03 03:04:37

