



1/2" impact adapter

NS-232

SAM Outillage

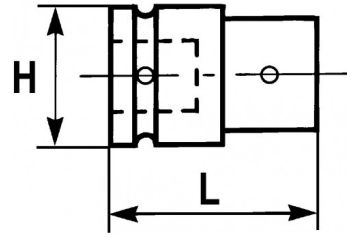
10 rue Camille de Rochetaillée
42000 Saint-Etienne - France

RCS Saint-Etienne B 338 002 231 | SAS au capital de 8 189 583 €

<https://www.sam-outillage.com/>

Photos and texts not contractually binding. Do not litter. Document generated on 2024-05-03 12:09:27





DESCRIPTION

1/2" impact adapter

Female square 1/2 --> male square 3/4.

For using of impact sockets 3/4.

Adapter think to resist to the effort transmitted by the impact machine (screw gun, nut setter with electric or pneumatic hand) used in industry and automotive.

Locking of adapter

STANDARDS / DIRECTIVES

NF ISO 1174-2

SAM Outillage

10 rue Camille de Rochetaillée
42000 Saint-Etienne - France

RCS Saint-Etienne B 338 002 231 | SAS au capital de 8 189 583 €

<https://www.sam-outillage.com/>

Photos and texts not contractually binding. Do not litter. Document generated on 2024-05-03 12:09:27



SPECIFIC DATA

| | |
|-----------------|----------------------------|
| Designation | NS 232 IMPACT ADAPTOR 1/2" |
| Sales reference | NS-232 |
| L (mm) | 44 |
| Weight (g) | 150 |
| H (mm) | 25 |
| Guarantee | O SAM TOOL guarantee. |

Guarantee applied**O | SAM TOOL guarantee.**

Guarantee without time limit on the tools used under normal conditions.

[>> Find out more](#)**SAM Outillage**10 rue Camille de Rochetaillée
42000 Saint-Etienne - France

RCS Saint-Etienne B 338 002 231 | SAS au capital de 8 189 583 €

<https://www.sam-outillage.com/>

Photos and texts not contractually binding. Do not litter. Document generated on 2024-05-03 12:09:27

