



## 1/2" short hexagonal impact sockets in mm

**NS-...**

### SAM Outillage

10 rue Camille de Rochetaillée  
42000 Saint-Etienne - France

RCS Saint-Etienne B 338 002 231 | SAS au capital de 8 189 583 €

<https://www.sam-outillage.com/>

Photos and texts not contractually binding. Do not litter. Document generated on 2024-05-01 05:07:04





## DESCRIPTION

### 1/2" short hexagonal impact sockets in mm

Sockets think to resist to the effort transmitted by the impact machine (screw gun, nut setter with electric or pneumatic hand) used in industry and automotive.

Locking of socket on the accessories allowing to be assured by a crossing shank maintained in

## STANDARDS / DIRECTIVES

NF ISO 1711-1, NF ISO 1174-2, NF ISO 2725-2

### SAM Outillage

10 rue Camille de Rochetaillée  
42000 Saint-Etienne - France

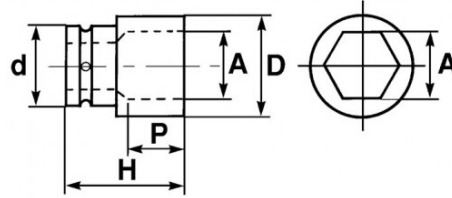
RCS Saint-Etienne B 338 002 231 | SAS au capital de 8 189 583 €

<https://www.sam-outillage.com/>

Photos and texts not contractually binding. Do not litter. Document generated on 2024-05-01 05:07:04



SPECIFIC DATA



Sales reference	Weight (g)	H (mm)	d (mm)	D (mm)	P (mm)	A (mm)	Guarantee
NS-8	60	38	25	14	5	8	O
NS-9	60	38	25	15	5	9	O
NS-10	85	38	25	17.5	5	10	O
NS-11	84	38	25	19	5	11	O
NS-12	80	38	25	20	5	12	O
NS-13	84	38	25	21	5	13	O
NS-14	80	38	25	22.5	7	14	O
NS-15	130	38	30	25	7	15	O
NS-16	130	38	30	26	9	16	O
NS-17	128	38	30	27.5	9	17	O
NS-18	129	38	30	29	9.5	18	O
NS-19	129	38	30	30	10	19	O
NS-21	115	38	30	30	10	21	O

**SAM Outillage**

10 rue Camille de Rochetaillée  
42000 Saint-Etienne - France

RCS Saint-Etienne B 338 002 231 | SAS au capital de 8 189 583 €

<https://www.sam-outillage.com/>



NS-22	132	38	30	32	10	22	O
NS-23	133	38	30	33.70	12	23	O
NS-24	140	45	30	35	12	24	O
NS-27	168	50	30	38	13	27	O
NS-29	210	50	30	40	14	29	O
NS-30	193	50	30	42	16.5	30	O
NS-32	435	50	30	45	16.5	32	O
NS-28	150	50	30	38	13	28	O
NS-33	435	50	30	45	16.5	33	O
NS-36	260	50	30	45	16.5	36	O
NS-38	290	50	30	45	16.5	38	O

**Guarantee applied**

**O | SAM TOOL guarantee.**

Guarantee without time limit on the tools used under normal conditions.

[>> Find out more](#)

**SAM Outillage**

10 rue Camille de Rochetaillée  
42000 Saint-Etienne - France

RCS Saint-Etienne B 338 002 231 | SAS au capital de 8 189 583 €

<https://www.sam-outillage.com/>

Photos and texts not contractually binding. Do not litter. Document generated on 2024-05-01 05:07:04

