



Short impact sockets 1/2" 6-flat in mm + clip

NS-...-FME

SAM Outillage

10 rue Camille de Rochetaillée
42000 Saint-Etienne - France

RCS Saint-Etienne B 338 002 231 | SAS au capital de 8 189 583 €

<https://www.sam-outillage.com/>

Photos and texts not contractually binding. Do not litter. Document generated on 2024-05-03 10:39:09





DESCRIPTION

Short impact sockets 1/2" 6-flat in mm + clip

Safety: To ensure your interventions are safe, to avoid dropping tools and wasting time, to prevent industrial accidents and improve productivity = Opt for the SAM anti-dropping solution. All the products in the FME range are equipped with a clip preventing you from dropping your tools.

Sockets think to resist to the effort transmitted by the impact machine (screw gun, nut setter with electric or pneumatic hand) used in industry and automotive.

Locking of socket on the accessories allowing to be assured by a crossing shank maintained in

STANDARDS / DIRECTIVES

NF ISO 1174-1, NF ISO 1711-1, NF ISO 2725-1

SAM Outillage

10 rue Camille de Rochetaillée
42000 Saint-Etienne - France

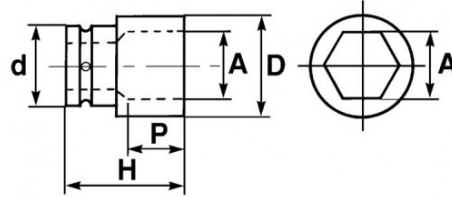
RCS Saint-Etienne B 338 002 231 | SAS au capital de 8 189 583 €

<https://www.sam-outillage.com/>

Photos and texts not contractually binding. Do not litter. Document generated on 2024-05-03 10:39:09



SPECIFIC DATA



Sales reference	Weight (g)	H (mm)	d (mm)	D (mm)	P (mm)	A (mm)	Guarantee
NS-10-FME	85	38	25	17.5	5	10	O
NS-11-FME	90	38	25	19	5	11	O
NS-12-FME	90	38	25	20	5	12	O
NS-13-FME	90	38	25	21	5	13	O
NS-14-FME	90	38	25	22.5	7	14	O
NS-15-FME	125	38	30	25	7	15	O
NS-16-FME	130	38	30	26	9	16	O
NS-17-FME	128	38	30	27.5	9	17	O
NS-18-FME	129	38	30	29	9.5	18	O
NS-21-FME	115	38	30	30	10	21	O
NS-19-FME	129	38	30	30	10	19	O
NS-22-FME	140	38	30	32	10	22	O
NS-23-FME	150	38	30	33.70	12	23	O

FME (FOREIGN MATERIAL EXCLUSION)

SAM Outillage

10 rue Camille de Rochetaillée
42000 Saint-Etienne - France

RCS Saint-Etienne B 338 002 231 | SAS au capital de 8 189 583 €

<https://www.sam-outillage.com/>

Photos and texts not contractually binding. Do not litter. Document generated on 2024-05-03 10:39:09



NS-24-FME	140	45	30	35	12	24	O
NS-8-FME	90	38	25	14	5	8	O
NS-9-FME	90	38	25	15	5	9	O
NS-27-FME	190	50	30	38	13	27	O
NS-29-FME	170	50	30	40	14	29	O
NS-30-FME	210	50	30	42	16.5	30	O
NS-32-FME	220	50	30	45	16.5	32	O

Guarantee applied

O | SAM TOOL guarantee.

Guarantee without time limit on the tools used under normal conditions.

[>> Find out more](#)

SAM Outillage

10 rue Camille de Rochetaillée
42000 Saint-Etienne - France

RCS Saint-Etienne B 338 002 231 | SAS au capital de 8 189 583 €

<https://www.sam-outillage.com/>

Photos and texts not contractually binding. Do not litter. Document generated on 2024-05-03 10:39:09

