



1/4" impact adapter

NR-232

SAM Outillage

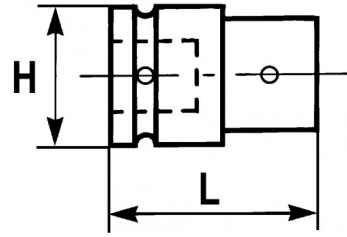
10 rue Camille de Rochetaillée
42000 Saint-Etienne - France

RCS Saint-Etienne B 338 002 231 | SAS au capital de 8 189 583 €

<https://www.sam-outillage.com/>

Photos and texts not contractually binding. Do not litter. Document generated on 2024-05-03 02:52:03





DESCRIPTION

1/4" impact adapter

Female square 1/4 --> male square 3/8.

For using of impact sockets 3/8.

Adapter think to resist to the effort transmitted by the impact machine (screw gun, nut setter with electric or pneumatic hand) used in industry and automotive.

Locking of adapter

STANDARDS / DIRECTIVES

NF ISO 1174-2

SAM Outillage

10 rue Camille de Rochetaillée
42000 Saint-Etienne - France

RCS Saint-Etienne B 338 002 231 | SAS au capital de 8 189 583 €

<https://www.sam-outillage.com/>

Photos and texts not contractually binding. Do not litter. Document generated on 2024-05-03 02:52:03



SPECIFIC DATA

Designation	IMPACT INCREASER 1/4"
Sales reference	NR-232
L (mm)	22
Weight (g)	15
H (mm)	13
Guarantee	O SAM TOOL guarantee.

Guarantee applied**O | SAM TOOL guarantee.**

Guarantee without time limit on the tools used under normal conditions.

[>> Find out more](#)**SAM Outillage**10 rue Camille de Rochetaillée
42000 Saint-Etienne - France

RCS Saint-Etienne B 338 002 231 | SAS au capital de 8 189 583 €

<https://www.sam-outillage.com/>

Photos and texts not contractually binding. Do not litter. Document generated on 2024-05-03 02:52:03

