



## 1" long impact sockets

**NM-30-L**

NM-...-L

### SAM Outillage

10 rue Camille de Rochetaillée  
42000 Saint-Etienne - France

RCS Saint-Etienne B 338 002 231 | SAS au capital de 8 189 583 €

<https://www.sam-outillage.com/>

Photos and texts not contractually binding. Do not litter. Document generated on 2024-05-04 18:55:01





## DESCRIPTION

### 1" long impact sockets

Sockets think to resist to the effort transmitted by the impact machine (screw gun, nut setter with electric or pneumatic hand) used in industry and automotive.

Locking of socket on the accessories allowing to be assured by a crossing shank maintained in

## STANDARDS / DIRECTIVES

NF ISO 1711-1, DIN 3129, NF ISO 1174-2, NF ISO 2725-2

### SAM Outillage

10 rue Camille de Rochetaillée  
42000 Saint-Etienne - France

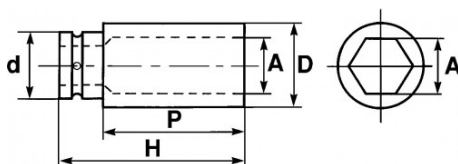
RCS Saint-Etienne B 338 002 231 | SAS au capital de 8 189 583 €

<https://www.sam-outillage.com/>

Photos and texts not contractually binding. Do not litter. Document generated on 2024-05-04 18:55:01



**SPECIFIC DATA**



Designation	NM30L LONG IMPACT SOCKET 1" OF 30 MM
Sales reference	NM-30-L
Weight (g)	1185
H (mm)	108
d (mm)	54
D (mm)	49
P (mm)	30
A (mm)	30
Guarantee	O

**Guarantee applied**

**O | SAM TOOL guarantee.**

Guarantee without time limit on the tools used under normal conditions.

[>> Find out more](#)

**SAM Outillage**

10 rue Camille de Rochetaillée  
42000 Saint-Etienne - France

RCS Saint-Etienne B 338 002 231 | SAS au capital de 8 189 583 €

<https://www.sam-outillage.com/>

Photos and texts not contractually binding. Do not litter. Document generated on 2024-05-04 18:55:01

