



1" long impact sockets

NM-...-L

SAM Outillage

10 rue Camille de Rochetaillée
42000 Saint-Etienne - France

RCS Saint-Etienne B 338 002 231 | SAS au capital de 8 189 583 €

<https://www.sam-outillage.com/>

Photos and texts not contractually binding. Do not litter. Document generated on 2024-05-04 19:16:18





DESCRIPTION

1" long impact sockets

Sockets think to resist to the effort transmitted by the impact machine (screw gun, nut setter with electric or pneumatic hand) used in industry and automotive.

Locking of socket on the accessories allowing to be assured by a crossing shank maintained in

STANDARDS / DIRECTIVES

NF ISO 1711-1, DIN 3129, NF ISO 1174-2, NF ISO 2725-2

SAM Outillage

10 rue Camille de Rochetaillée
42000 Saint-Etienne - France

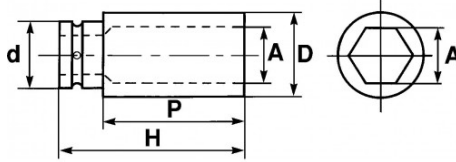
RCS Saint-Etienne B 338 002 231 | SAS au capital de 8 189 583 €

<https://www.sam-outillage.com/>

Photos and texts not contractually binding. Do not litter. Document generated on 2024-05-04 19:16:18



SPECIFIC DATA



Sales reference	Weight (g)	H (mm)	d (mm)	D (mm)	P (mm)	A (mm)	Guarantee
NM-22-L	1000	108	54	39	30	22	O
NM-23-L	960	108	54	40	30	23	O
NM-24-L	1250	90	54	41.2	48	24	O
NM-27-L	1230	108	54	45	30	27	O
NM-29-L	1230	108	54	47.5	30	29	O
NM-30-L	1185	108	54	49	30	30	O
NM-32-L	1000	108	54	51.5	30	32	O
NM-33-L	951	108	54	52.50	35	33	O
NM-34-L	1300	108	54	54	35	34	O
NM-35-L	1350	108	54	55	35	35	O
NM-36-L	1000	108	54	56.5	35	36	O
NM-41-L	1475	108	54	62.5	38	41	O
NM-46-L	1705	95	54	68	72	46	O

SAM Outillage

10 rue Camille de Rochetaillée
42000 Saint-Etienne - France

RCS Saint-Etienne B 338 002 231 | SAS au capital de 8 189 583 €

<https://www.sam-outillage.com/>



NM-50-L	1690	108	54	74	42	50	O
NM-55-L	1755	108	54	80	45	55	O
NM-60-L	2600	108	54	86.5	48	60	O
NM-65-L	2390	108	54	92.5	50	65	O

Guarantee applied**O | SAM TOOL guarantee.**

Guarantee without time limit on the tools used under normal conditions.

>> [Find out more](#)

SAM Outillage

10 rue Camille de Rochetaillée
42000 Saint-Etienne - France

RCS Saint-Etienne B 338 002 231 | SAS au capital de 8 189 583 €

<https://www.sam-outillage.com/>

Photos and texts not contractually binding. Do not litter. Document generated on 2024-05-04 19:16:18

