



## 1"1/2" short impacts sockets

**NG-100**

NG-...

### SAM Outillage

10 rue Camille de Rochetaillée  
42000 Saint-Etienne - France

RCS Saint-Etienne B 338 002 231 | SAS au capital de 8 189 583 €

<https://www.sam-outillage.com/>

Photos and texts not contractually binding. Do not litter. Document generated on 2024-05-03 03:43:28





## DESCRIPTION

### 1"1/2" short impacts sockets

Sockets designed to withstand the forces transmitted by impact machines. (power screwdriver, electrical or pneumatic impact wrenches) used in industry or the automotive sector.

Locking by pin and locking ring.

Very good resistance to wear.

Burnished finish.

## STANDARDS / DIRECTIVES

NF ISO 1711-1, NF ISO 1174-2, NF ISO 2725-2

### SAM Outillage

10 rue Camille de Rochetaillée  
42000 Saint-Etienne - France

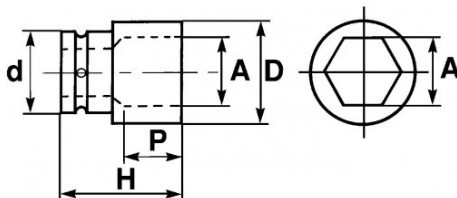
RCS Saint-Etienne B 338 002 231 | SAS au capital de 8 189 583 €

<https://www.sam-outillage.com/>

Photos and texts not contractually binding. Do not litter. Document generated on 2024-05-03 03:43:28



SPECIFIC DATA



Designation	IMPACT SOCKET 1"1/2" 100MM
Sales reference	NG-100
Weight (g)	7400
H (mm)	125
d (mm)	127
D (mm)	140
P (mm)	54
A (mm)	100
Guarantee	O

**Guarantee applied**

**O | SAM TOOL guarantee.**

Guarantee without time limit on the tools used under normal conditions.

[>> Find out more](#)

**SAM Outillage**

10 rue Camille de Rochetaillée  
42000 Saint-Etienne - France

RCS Saint-Etienne B 338 002 231 | SAS au capital de 8 189 583 €

<https://www.sam-outillage.com/>

Photos and texts not contractually binding. Do not litter. Document generated on 2024-05-03 03:43:28

