



## Female / female adapter 3/8"

**J-205-F**

### SAM Outillage

10 rue Camille de Rochetaillée  
42000 Saint-Etienne - France

RCS Saint-Etienne B 338 002 231 | SAS au capital de 8 189 583 €

<https://www.sam-outillage.com/>

Photos and texts not contractually binding. Do not litter. Document generated on 2024-05-08 08:51:23





**DESCRIPTION**

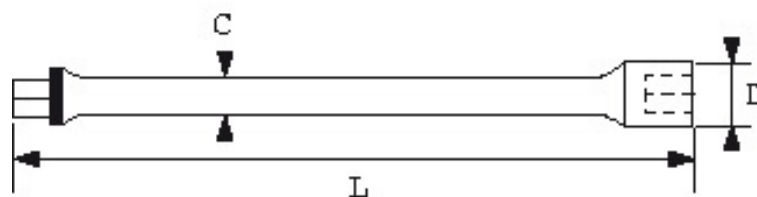
**Female / female adapter 3/8"**

Rigid for work in the centre.

**STANDARDS / DIRECTIVES**

NF ISO 1174-1

**SPECIFIC DATA**



**SAM Outillage**

10 rue Camille de Rochetaillée  
42000 Saint-Etienne - France

RCS Saint-Etienne B 338 002 231 | SAS au capital de 8 189 583 €

<https://www.sam-outillage.com/>

Photos and texts not contractually binding. Do not litter. Document generated on 2024-05-08 08:51:23



Designation	3/8" ADAPTER
Sales reference	J-205-F
L (mm)	65
Weight (g)	208
C (mm)	12
D (mm)	18
Guarantee	O   SAM TOOL guarantee.

**Guarantee applied****O | SAM TOOL guarantee.**

Guarantee without time limit on the tools used under normal conditions.

[>> Find out more](#)

**SAM Outillage**

10 rue Camille de Rochetaillée  
42000 Saint-Etienne - France

RCS Saint-Etienne B 338 002 231 | SAS au capital de 8 189 583 €

<https://www.sam-outillage.com/>

Photos and texts not contractually binding. Do not litter. Document generated on 2024-05-08 08:51:23

