



## Cut drills

**FP-1-...**

### SAM Outillage

10 rue Camille de Rochetaillée  
42000 Saint-Etienne - France

RCS Saint-Etienne B 338 002 231 | SAS au capital de 8 189 583 €

<https://www.sam-outillage.com/>

Photos and texts not contractually binding. Do not litter. Document generated on 2024-05-20 21:51:06





## DESCRIPTION

---

### Cut drills

short serie, high speed steel HSS, cut from HSS, for special surfaces.

cylindrical shank, standard right-hand cut.

for drillings 1 to 13 mm in alloy steel or not (until 235 HB), stainless steel ( until 160 HB), cast iron (until 250HB)

## STANDARDS / DIRECTIVES

---

DIN 338, NF ISO 235

---

### SAM Outillage

10 rue Camille de Rochetaillée  
42000 Saint-Etienne - France

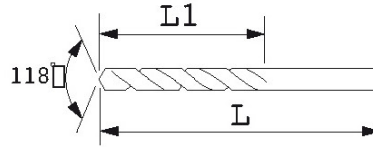
RCS Saint-Etienne B 338 002 231 | SAS au capital de 8 189 583 €

<https://www.sam-outillage.com/>

Photos and texts not contractually binding. Do not litter. Document generated on 2024-05-20 21:51:06



SPECIFIC DATA



Sales reference	L (mm)	Weight (g)	Diameter (mm)	L1 (mm)	Guarantee
FP-1-1	34	10	1	12	C
FP-1-1,5	40	10	1.5	18	C
FP-1-2	49	2	2	24	C
FP-1-2,5	57	2	2.5	30	C
FP-1-3	61	3	3	33	C
FP-1-3,3	65	3	3.3	36	C
FP-1-3,5	70	4	3.5	39	C
FP-1-4	75	6	4	43	C
FP-1-4,5	80	8	4.5	47	C
FP-1-5	86	10	5	52	C
FP-1-5,5	93	13	5.5	57	C
FP-1-6	93	15	6	57	C
FP-1-6,5	101	19	6.5	63	C

**SAM Outillage**

10 rue Camille de Rochetaillée  
42000 Saint-Etienne - France

RCS Saint-Etienne B 338 002 231 | SAS au capital de 8 189 583 €

<https://www.sam-outillage.com/>



FP-1-7	109	24	7	69	C
FP-1-8	117	33	8	75	C
FP-1-8,5	117	37	8.5	75	C
FP-1-9	125	45	9	81	C
FP-1-9,5	125	49	9.5	81	C
FP-1-10	133	58	10	87	C
FP-1-10,5 (not marketed)	133	64	10.5	87	C
FP-1-11	142	74	11	94	C
FP-1-11,5	142	81	11.5	94	C
FP-1-12	151	94	12	101	C
FP-1-12,5 (not marketed)	151	100	12.5	101	C
FP-1-13	151	110	13	101	C

**Guarantee applied**

**C | Consumable**

The products in this category will not be replaced and are subject to normal wear phenomena.

[>> Find out more](#)

**SAM Outillage**

10 rue Camille de Rochetaillée  
42000 Saint-Etienne - France

RCS Saint-Etienne B 338 002 231 | SAS au capital de 8 189 583 €

<https://www.sam-outillage.com/>

Photos and texts not contractually binding. Do not litter. Document generated on 2024-05-20 21:51:06

