

2-arm multi-purpose extractors

EX-270-2

EX-270...

SAM Outillage

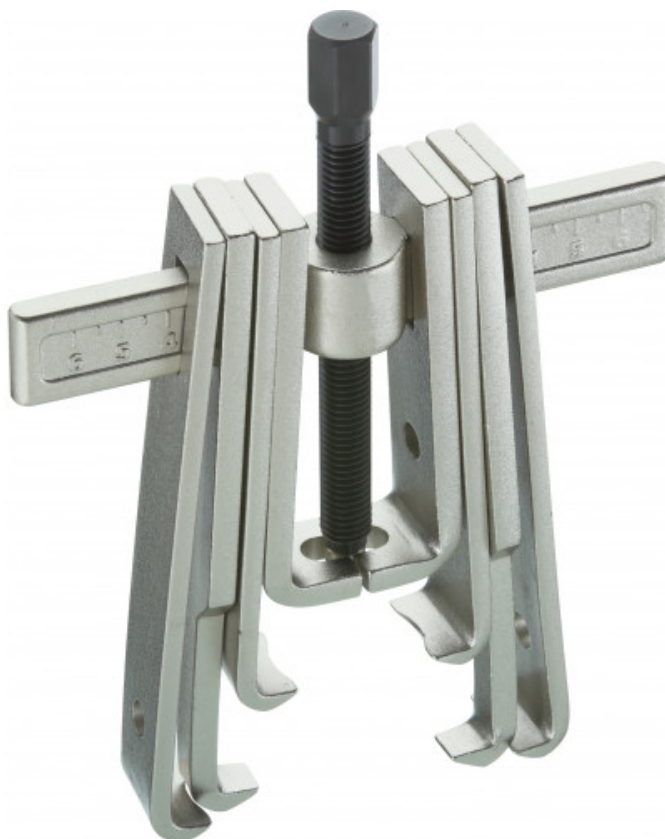
10 rue Camille de Rochetaillée
42000 Saint-Etienne - France

RCS Saint-Etienne B 338 002 231 | SAS au capital de 8 189 583 €

<https://www.sam-outillage.com/>

Photos and texts not contractually binding. Do not litter. Document generated on 2024-04-30 20:30:16





DESCRIPTION

2-arm multi-purpose extractors

Multi-purpose 2-claw pullers. To grip bearings and raceways from the inside or outside. Versatile: Supplied with 4 different types of claws for the most frequent usages. 8 in 1 pullers.

SPECIFIC DATA

SAM Outillage

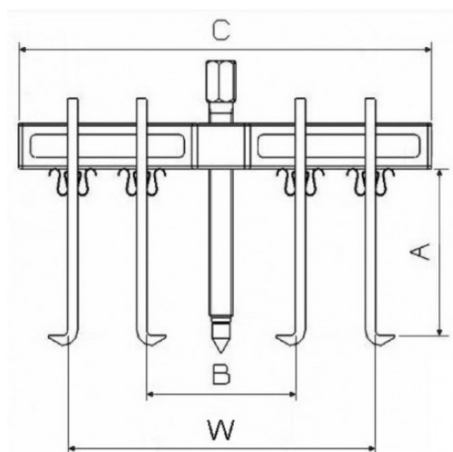
10 rue Camille de Rochetaillée
42000 Saint-Etienne - France

RCS Saint-Etienne B 338 002 231 | SAS au capital de 8 189 583 €

<https://www.sam-outillage.com/>

Photos and texts not contractually binding. Do not litter. Document generated on 2024-04-30 20:30:16





Designation	TWO-ARM MULTI-PURPOSE EXTRACTOR
Sales reference	EX-270-2
Weight (kg)	6.07
C (mm)	280
A (mm)	182
Power T	8
B mm	250
B mm	35
B mm	260
B mm	105
Guarantee	O

Guarantee applied

O | SAM TOOL guarantee.

Guarantee without time limit on the tools used under normal conditions.

[>> Find out more](#)

SAM Outillage

10 rue Camille de Rochetaillée
42000 Saint-Etienne - France

RCS Saint-Etienne B 338 002 231 | SAS au capital de 8 189 583 €

<https://www.sam-outillage.com/>

Photos and texts not contractually binding. Do not litter. Document generated on 2024-04-30 20:30:16

