

1/4" extra-long grooved Phillips® bits for soft materials

E-312-PH1L
E-312-PH...L

SAM Outillage

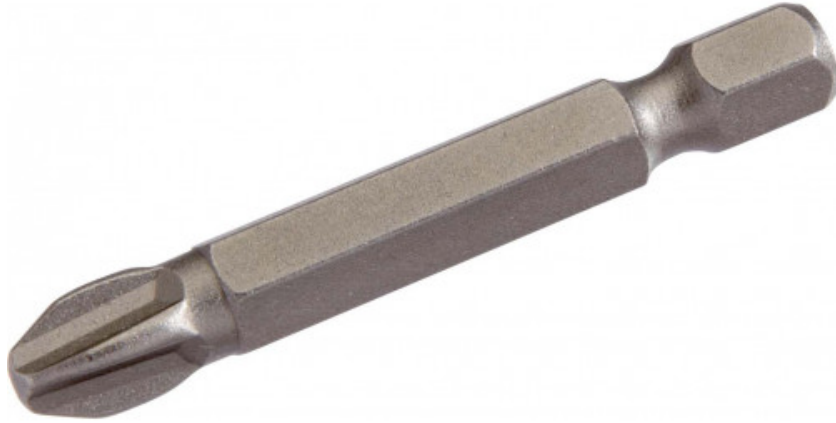
10 rue Camille de Rochetaillée
42000 Saint-Etienne - France

RCS Saint-Etienne B 338 002 231 | SAS au capital de 8 189 583 €

<https://www.sam-outillage.com/>

Photos and texts not contractually binding. Do not litter. Document generated on 2024-05-01 03:34:36





DESCRIPTION

1/4" extra-long grooved Phillips® bits for soft materials

Hard bits. 1/4 drive.

STANDARDS / DIRECTIVES

NF ISO 1173, DIN 3126

SPECIFIC DATA

SAM Outillage

10 rue Camille de Rochetaillée
42000 Saint-Etienne - France

RCS Saint-Etienne B 338 002 231 | SAS au capital de 8 189 583 €

<https://www.sam-outillage.com/>

Photos and texts not contractually binding. Do not litter. Document generated on 2024-05-01 03:34:36





Designation	BIT 5/16 PHILIPS N° 1L
Sales reference	E-312-PH1L
L (mm)	70
Weight (g)	9
Pattern	1
Guarantee	C

Guarantee applied

C | Consumable

The products in this category will not be replaced and are subject to normal wear phenomena.

>> [Find out more](#)

SAM Outillage

10 rue Camille de Rochetaillée
42000 Saint-Etienne - France

RCS Saint-Etienne B 338 002 231 | SAS au capital de 8 189 583 €

<https://www.sam-outillage.com/>

Photos and texts not contractually binding. Do not litter. Document generated on 2024-05-01 03:34:36

