



**1/4" extra-long grooved Phillips® bits
for soft materials**

E-312-PH...L

SAM Outillage

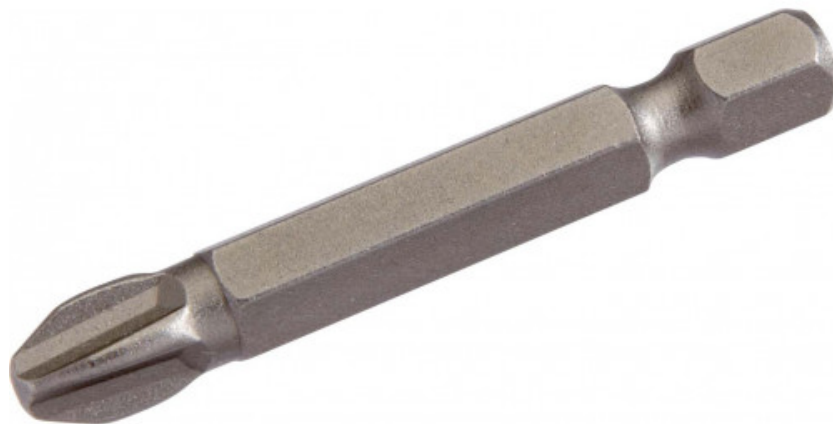
10 rue Camille de Rochetaillée
42000 Saint-Etienne - France

RCS Saint-Etienne B 338 002 231 | SAS au capital de 8 189 583 €

<https://www.sam-outillage.com/>

Photos and texts not contractually binding. Do not litter. Document generated on 2024-05-01 02:29:01





DESCRIPTION

1/4" extra-long grooved Phillips® bits for soft materials

Hard bits. 1/4 drive.

STANDARDS / DIRECTIVES

NF ISO 1173, DIN 3126

SPECIFIC DATA

SAM Outillage

10 rue Camille de Rochetaillée
42000 Saint-Etienne - France

RCS Saint-Etienne B 338 002 231 | SAS au capital de 8 189 583 €

<https://www.sam-outillage.com/>

Photos and texts not contractually binding. Do not litter. Document generated on 2024-05-01 02:29:01





| Sales reference | L (mm) | Weight (g) | Pattern | Guarantee |
|---------------------------|--------|------------|---------|-----------|
| E-312-PH1L (not marketed) | 70 | 9 | 1 | C |
| E-312-PH2L (not marketed) | 70 | 9 | 2 | C |

Guarantee applied

C | Consumable

The products in this category will not be replaced and are subject to normal wear phenomena.

>> [Find out more](#)

SAM Outillage

10 rue Camille de Rochetaillée
42000 Saint-Etienne - France

RCS Saint-Etienne B 338 002 231 | SAS au capital de 8 189 583 €

<https://www.sam-outillage.com/>

