



Extractors for spherical joints

733-VL-6

733-VL6/7

SAM Outillage

10 rue Camille de Rochetaillée
42000 Saint-Etienne - France

RCS Saint-Etienne B 338 002 231 | SAS au capital de 8 189 583 €

<https://www.sam-outillage.com/>

Photos and texts not contractually binding. Do not litter. Document generated on 2024-05-03 10:46:41





DESCRIPTION

Extractors for spherical joints

SPECIFIC DATA

SAM Outillage

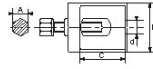
10 rue Camille de Rochetaillée
42000 Saint-Etienne - France

RCS Saint-Etienne B 338 002 231 | SAS au capital de 8 189 583 €

<https://www.sam-outillage.com/>

Photos and texts not contractually binding. Do not litter. Document generated on 2024-05-03 10:46:41





| | |
|-----------------|------------------------------|
| Designation | EXTRACTOR ROD BALL DIRECTION |
| Sales reference | 733-VL-6 |
| Weight (g) | 280 |
| C (mm) | 40 |
| d (mm) | 18 |
| D (mm) | 50 |
| A (mm) | 17 |
| Allocation | |
| Guarantee | O |

Guarantee applied

O | SAM TOOL guarantee.

Guarantee without time limit on the tools used under normal conditions.

>> [Find out more](#)

SAM Outillage

10 rue Camille de Rochetaillée
42000 Saint-Etienne - France

RCS Saint-Etienne B 338 002 231 | SAS au capital de 8 189 583 €

<https://www.sam-outillage.com/>

