



## Box of spare blade for retractable knives and cutters

**379-...**

### SAM Outillage

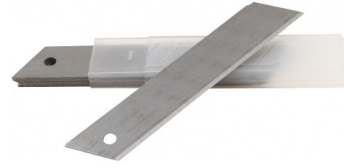
10 rue Camille de Rochetaillée  
42000 Saint-Etienne - France

RCS Saint-Etienne B 338 002 231 | SAS au capital de 8 189 583 €

<https://www.sam-outillage.com/>

Photos and texts not contractually binding. Do not litter. Document generated on 2024-05-03 09:36:41





**DESCRIPTION**

**Box of spare blade for retractable knives and cutters**

carbon steel blades

**SPECIFIC DATA**

Sales reference	Weight (g)	Packaging	Designation	Number of blades	Blade width mm	Guarantee
379-25	175	Distributor	8 snap-off elements	10	25	C
379-70	710	Box	8 snap-off elements	100	18	C

**SAM Outillage**

10 rue Camille de Rochetaillée  
42000 Saint-Etienne - France

RCS Saint-Etienne B 338 002 231 | SAS au capital de 8 189 583 €

<https://www.sam-outillage.com/>

Photos and texts not contractually binding. Do not litter. Document generated on 2024-05-03 09:36:41



379-10	420	Distributor	Large reversible trapezoid blade	100	60	C
379-60	232	Box	13 snap-off elements	100	9.5	C
379-30	505	Distributor	Reversible double hook	30	-	C

**Guarantee applied**

**C | Consumable**

The products in this category will not be replaced and are subject to normal wear phenomena.

[>> Find out more](#)

**SAM Outillage**

10 rue Camille de Rochetaillée  
42000 Saint-Etienne - France

RCS Saint-Etienne B 338 002 231 | SAS au capital de 8 189 583 €

<https://www.sam-outillage.com/>

Photos and texts not contractually binding. Do not litter. Document generated on 2024-05-03 09:36:41

