



## Extractor knuckle

**3653-2**

3653-...

### SAM Outillage

10 rue Camille de Rochetaillée  
42000 Saint-Etienne - France

RCS Saint-Etienne B 338 002 231 | SAS au capital de 8 189 583 €

<https://www.sam-outillage.com/>

Photos and texts not contractually binding. Do not litter. Document generated on 2024-04-24 09:40:33





## DESCRIPTION

### Extractor knuckle

Polished chrome-plate finish. Central pressure screw with T-shaped force lever. Small separation to facilitate use with small bearings.

## SPECIFIC DATA

### SAM Outillage

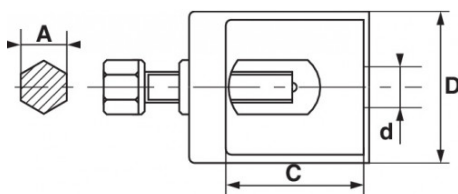
10 rue Camille de Rochetaillée  
42000 Saint-Etienne - France

RCS Saint-Etienne B 338 002 231 | SAS au capital de 8 189 583 €

<https://www.sam-outillage.com/>

Photos and texts not contractually binding. Do not litter. Document generated on 2024-04-24 09:40:33





Designation	SWIVEL EXTRACTOR
Sales reference	3653-2
Weight (g)	290
C (mm)	40
d (mm)	18
D (mm)	57
A (mm)	17
Allocation	Cars
Guarantee	O

#### Guarantee applied

#### O | SAM TOOL guarantee.

Guarantee without time limit on the tools used under normal conditions.

[>> Find out more](#)

#### SAM Outillage

10 rue Camille de Rochetaillée  
42000 Saint-Etienne - France

RCS Saint-Etienne B 338 002 231 | SAS au capital de 8 189 583 €

<https://www.sam-outillage.com/>

Photos and texts not contractually binding. Do not litter. Document generated on 2024-04-24 09:40:33

