



## Extractor knuckle

**3653-...**

### SAM Outillage

10 rue Camille de Rochetaillée  
42000 Saint-Etienne - France

RCS Saint-Etienne B 338 002 231 | SAS au capital de 8 189 583 €

<https://www.sam-outillage.com/>

Photos and texts not contractually binding. Do not litter. Document generated on 2024-04-24 13:24:00



**DESCRIPTION****Extractor knuckle**

Polished chrome-plate finish. Central pressure screw with T-shaped force lever. Small separation to facilitate use with small bearings.

**SPECIFIC DATA****SAM Outillage**

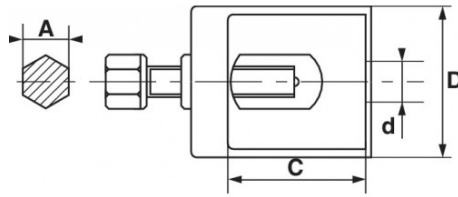
10 rue Camille de Rochetaillée  
42000 Saint-Etienne - France

RCS Saint-Etienne B 338 002 231 | SAS au capital de 8 189 583 €

<https://www.sam-outillage.com/>

Photos and texts not contractually binding. Do not litter. Document generated on 2024-04-24 13:24:00





Sales reference	Weight (g)	C (mm)	d (mm)	D (mm)	A (mm)	Allocation	Guarantee
3653-2	290	40	18	57	17	Cars	O
3653-3	520	48	23	70	17	Cars	O

**Guarantee applied**

**O | SAM TOOL guarantee.**

Guarantee without time limit on the tools used under normal conditions.

>> [Find out more](#)

**SAM Outillage**

10 rue Camille de Rochetaillée  
42000 Saint-Etienne - France

RCS Saint-Etienne B 338 002 231 | SAS au capital de 8 189 583 €

<https://www.sam-outillage.com/>

Photos and texts not contractually binding. Do not litter. Document generated on 2024-04-24 13:24:00

