



## Screwholding Phillips® head screwdriver

**267-P-...Empreinte\_Phillips**

### SAM Outillage

10 rue Camille de Rochetaillée  
42000 Saint-Etienne - France

RCS Saint-Etienne B 338 002 231 | SAS au capital de 8 189 583 €

<https://www.sam-outillage.com/>

Photos and texts not contractually binding. Do not litter. Document generated on 2024-04-30 18:21:25





## DESCRIPTION

### Screwholding Phillips® head screwdriver

Blade in steel with chrome-vanadium.

A sliding rod guide maintain any head screw form on the screwdriver's blade.

Practical in difficult access case and possibility to hold the whole with one hand.

Presentation: burnished

## SPECIFIC DATA

### SAM Outillage

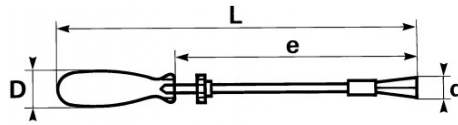
10 rue Camille de Rochetaillée  
42000 Saint-Etienne - France

RCS Saint-Etienne B 338 002 231 | SAS au capital de 8 189 583 €

<https://www.sam-outillage.com/>

Photos and texts not contractually binding. Do not litter. Document generated on 2024-04-30 18:21:25





| Sales reference | L (mm) | Weight (g) | e (mm) | D (mm) | Pattern | Guarantee |
|-----------------|--------|------------|--------|--------|---------|-----------|
| 267-P-1         | 220    | 96         | 125    | 24     | NÂ° 1   | O         |
| 267-P-2         | 270    | 118        | 180    | 24     | NÂ° 2   | O         |

**Guarantee applied**

**O | SAM TOOL guarantee.**

Guarantee without time limit on the tools used under normal conditions.

>> [Find out more](#)

**SAM Outillage**

10 rue Camille de Rochetaillée  
42000 Saint-Etienne - France

RCS Saint-Etienne B 338 002 231 | SAS au capital de 8 189 583 €

<https://www.sam-outillage.com/>

