



## Torx® sockets female

**19144-18**

19144-...

### SAM Outillage

10 rue Camille de Rochetaillée  
42000 Saint-Etienne - France

RCS Saint-Etienne B 338 002 231 | SAS au capital de 8 189 583 €

<https://www.sam-outillage.com/>

Photos and texts not contractually binding. Do not litter. Document generated on 2024-09-08 19:02:11





## DESCRIPTION

### Torx® sockets female

Sockets designed to withstand the forces transmitted by impact machines. (Electric or pneumatic screwdrivers and impact wrenches). Locking by pin and ring. Very great resistance to wear. Burnished finish.

## STANDARDS / DIRECTIVES

NF ISO 1174-2, NF ISO 1711-2

### SAM Outillage

10 rue Camille de Rochetaillée  
42000 Saint-Etienne - France

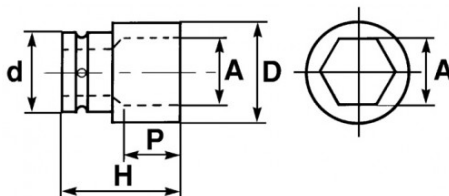
RCS Saint-Etienne B 338 002 231 | SAS au capital de 8 189 583 €

<https://www.sam-outillage.com/>

Photos and texts not contractually binding. Do not litter. Document generated on 2024-09-08 19:02:11



**SPECIFIC DATA**



Designation	TORX IMPACT SOCKET 1/2" FEMALE SHORT 18 MM
Sales reference	19144-18
Weight (g)	90
H (mm)	38
d (mm)	25
D (mm)	22.2
P (mm)	13
A (mm)	18
Guarantee	O

**Guarantee applied**

**O | SAM TOOL guarantee.**

Guarantee without time limit on the tools used under normal conditions.

[>> Find out more](#)

**SAM Outillage**

10 rue Camille de Rochetaillée  
 42000 Saint-Etienne - France

RCS Saint-Etienne B 338 002 231 | SAS au capital de 8 189 583 €

<https://www.sam-outillage.com/>

