



## Impact sockets 1/2" " - 40mm and 41mm

**19143-41**

19143-...

### SAM Outillage

10 rue Camille de Rochetaillée  
42000 Saint-Etienne - France

RCS Saint-Etienne B 338 002 231 | SAS au capital de 8 189 583 €

<https://www.sam-outillage.com/>

Photos and texts not contractually binding. Do not litter. Document generated on 2024-04-26 10:31:55





## DESCRIPTION

### Impact sockets 1/2" "- 40mm and 41mm

Square impact sockets 1/2" for hub nuts.

## STANDARDS / DIRECTIVES

NF ISO 1174-1, NF ISO 1711-1, NF ISO 2725-1

## SPECIFIC DATA

### SAM Outillage

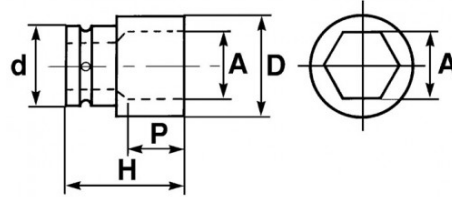
10 rue Camille de Rochetaillée  
42000 Saint-Etienne - France

RCS Saint-Etienne B 338 002 231 | SAS au capital de 8 189 583 €

<https://www.sam-outillage.com/>

Photos and texts not contractually binding. Do not litter. Document generated on 2024-04-26 10:31:55





Designation	IMPACT SOCKET 1/2" 12-FLAT LENGTH 41 MM
Sales reference	19143-41
Weight (g)	650
H (mm)	58
d (mm)	44
D (mm)	60
P (mm)	22
A (mm)	41
Guarantee	O

**Guarantee applied**

**C | Consumable**

The products in this category will not be replaced and are subject to normal wear phenomena.

O | SAM TOOL guarantee.

Guarantee without time limit on the tools used under normal conditions.

>> [Find out more](#)

**SAM Outillage**

10 rue Camille de Rochetaillée  
 42000 Saint-Etienne - France

RCS Saint-Etienne B 338 002 231 | SAS au capital de 8 189 583 €

<https://www.sam-outillage.com/>

Photos and texts not contractually binding. Do not litter. Document generated on 2024-04-26 10:31:55

