



Impact sockets 1/2" " - 40mm and 41mm

19143-40

19143-...

SAM Outillage

10 rue Camille de Rochetaillée
42000 Saint-Etienne - France

RCS Saint-Etienne B 338 002 231 | SAS au capital de 8 189 583 €

<https://www.sam-outillage.com/>

Photos and texts not contractually binding. Do not litter. Document generated on 2024-04-26 06:35:44





DESCRIPTION

Impact sockets 1/2" "- 40mm and 41mm

Square impact sockets 1/2" for hub nuts.

STANDARDS / DIRECTIVES

NF ISO 1174-1, NF ISO 1711-1, NF ISO 2725-1

SPECIFIC DATA

SAM Outillage

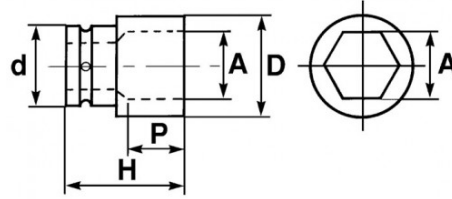
10 rue Camille de Rochetaillée
42000 Saint-Etienne - France

RCS Saint-Etienne B 338 002 231 | SAS au capital de 8 189 583 €

<https://www.sam-outillage.com/>

Photos and texts not contractually binding. Do not litter. Document generated on 2024-04-26 06:35:44





Designation	IMPACT SOCKET 1/2" 12-FLAT LENGTH 40 MM
Sales reference	19143-40
Weight (g)	600
H (mm)	57
d (mm)	44
D (mm)	56
P (mm)	21
A (mm)	40
Guarantee	O

Guarantee applied

C | Consumable

The products in this category will not be replaced and are subject to normal wear phenomena.

O | SAM TOOL guarantee.

Guarantee without time limit on the tools used under normal conditions.

>> [Find out more](#)

SAM Outillage

10 rue Camille de Rochetaillée
 42000 Saint-Etienne - France

RCS Saint-Etienne B 338 002 231 | SAS au capital de 8 189 583 €

<https://www.sam-outillage.com/>

Photos and texts not contractually binding. Do not litter. Document generated on 2024-04-26 06:35:44

