



Impact sockets 1/2" " - 40mm and 41mm

19143-...

SAM Outillage

10 rue Camille de Rochetaillée
42000 Saint-Etienne - France

RCS Saint-Etienne B 338 002 231 | SAS au capital de 8 189 583 €

<https://www.sam-outillage.com/>

Photos and texts not contractually binding. Do not litter. Document generated on 2024-04-26 04:36:59





DESCRIPTION

Impact sockets 1/2" - 40mm and 41mm

Square impact sockets 1/2" for hub nuts.

STANDARDS / DIRECTIVES

NF ISO 1174-1, NF ISO 1711-1, NF ISO 2725-1

SPECIFIC DATA

SAM Outillage

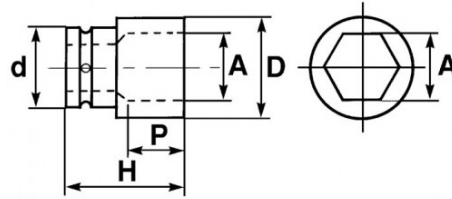
10 rue Camille de Rochetaillée
42000 Saint-Etienne - France

RCS Saint-Etienne B 338 002 231 | SAS au capital de 8 189 583 €

<https://www.sam-outillage.com/>

Photos and texts not contractually binding. Do not litter. Document generated on 2024-04-26 04:36:59





Sales reference	Weight (g)	H (mm)	d (mm)	D (mm)	P (mm)	A (mm)	Guarantee
19143-39	530	57	44	56	21	39	C
19143-41	650	58	44	60	22	41	O
19143-40	600	57	44	56	21	40	O

Guarantee applied

C | Consumable

The products in this category will not be replaced and are subject to normal wear phenomena.

O | SAM TOOL guarantee.

Guarantee without time limit on the tools used under normal conditions.

[>> Find out more](#)

SAM Outillage

10 rue Camille de Rochetaillée
42000 Saint-Etienne - France

RCS Saint-Etienne B 338 002 231 | SAS au capital de 8 189 583 €

<https://www.sam-outillage.com/>

Photos and texts not contractually binding. Do not litter. Document generated on 2024-04-26 04:36:59

